

SIZING CHARTS

Sizing is for reference only. Actual sizing may vary by style. To get a true sense of product sizes, we encourage you to use samples, which we offer at a discounted price. And there's no extra charge for larger sizes on in-stock styles.

Tops & jackets to fit body measurements / Regular & Tall

Trimark Tall styles provide a fit that includes an additional 2" in the length of the body and the sleeves.

MEN'S TOPS AND JACKETS	XS	S	M	L	XL	2XL	3XL	4XL	5XL
Neck (inches)	13-13.5	14-14.5	15-15.5	16-16.5	17-17.5	17.5-18	18.5-19	19.5-20	20.5-21
Chest (inches)	33-35	35-38	39-41	42-44	45-48	49-52	53-56	57-60	61-64
Sleeve Length (inches)	32	33-33.5	34-34.5	35-35.5	36-36.5	37-37.5	38-38.5	38.5-39	39-39.5
Sleeve Length Tall (inches)				37-37.5	38-38.5	39-39.5	40-40.5	40.5-41	41-41.5

MEN'S BOTTOMS	XS	S	M	L	XL	2XL	3XL	4XL	5XL
Waist (inches)	28-29	30-31	32-33	34-35	36-37	38-39	40-41	42-43	44-45
Hip (inches)	34-36	36-38	38-40	40-42	42-44	44-46	46-48	48-50	50-52
Inseam (inches)	31.5	31.5	31.5	31.5	31.5	31.5	31.5		

WOMEN'S TOPS AND JACKETS	XS	S	M	L	XL	2XL	3XL
Sizing Reference	2-4	6-8	10-12	14-16	18	20	22+
Chest (inches)	30-32	33-35	36-38	39-41	42-44	45-47	48-50
Sleeve Length (inches)	29.5-30	30.5-31	31-31.5	32-32.5	32.5-33	33-33.5	33.5-34

WOMEN'S BOTTOMS	XS	S	M	L	XL	2XL	3XL
Sizing Reference	2-4	6-8	10-12	14-16	18	20	22+
Waist (inches)	24-26	26.5-28.5	29-30	31.5-33.5	34-36	36.5-38.5	39-40.5
Hip (inches)	33-35	35.5-37.5	38-40	40.5-42	43-45	45.5-47.5	48-50
Inseam (inches)	31	31	31	31	31	31	31

YOUTH	JR2XS	JRXS	JRS	JRM	JRL	JRXL
Sizing Reference	5-6	6-8	8-10	10-12	12-14	14-16
Chest (inches)	24-25	26-27	28-29	30-31	32-33	34-35
Sleeve Length (inches)	24.24.5	25-25.5	26-26.5	28-28.5	29-29.5	30-30.5
Waist (inches)	19-22	22-24	24-26	26-28	28-30	30-32
Hip (inches)	23-26	26-28	28-30	30-32	32-34	34-36
Inseam (inches)	18	21	24	26	28	30

Roots 73™ Tops & jackets to fit body measurements



MEN'S TOPS	XS	S	M	L	XL	2XL	3XL	4XL	5XL
To Fit Chest	33 - 35	35.5 - 37	38 - 40	41 - 43	44 - 46	47 - 49	50 - 52	53 - 55	56 - 58
To Fit Sleeve Length	31 - 32	32 - 33	33 - 34	34 - 35	35 - 36	36 - 36.75	36.75 - 37.5	37.5 - 38.25	38.25 - 39
Neck Circumference	15	15 - 15.5	15.5 - 16	16 - 16.5	17 - 17.5	18 - 18.5	18.5 - 19	19 - 19.5	19.5 - 20

MEN'S BOTTOMS	S	M	L	XL	2XL	3XL
Waist	31 - 32	33 - 34	35 - 37	38 - 40	41 - 43	44 - 46
Hip	35 - 36	36 - 37	38 - 39	43.5 - 45	46.5 - 48	49
Inseam-Regular	31	31	31	31	31	31

WOMEN'S TOPS	XS	S	M	L	XL	2XL	3XL
To Fit Chest	32 - 33	34 - 35	36 - 37	38.5 - 40	41.5 - 43	44.5 - 46	48
To Fit Sleeve Length	31.75	32.375	33	33.75	34.5	35.25	36

WOMEN'S BOTTOMS	XS	S	M	L	XL	2XL
SIZE EQUIVALENT	2	4 - 6	8 - 10	12 - 14	16 - 18	20
Waist	24 - 25	26 - 27	28 - 29	30.5 - 32	33.5 - 35	36.5
Hip	34 - 35	36 - 37	38 - 39	40.5 - 42	43.5 - 45	46.5

Roots 73™ is a trademark of Roots Corporation used under license.

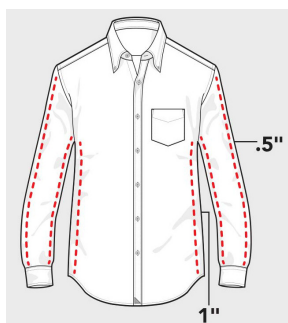
UNTUCKit



MEN'S	S	M	L	XL	2XL	3XL
Chest (inches)	35-37	38-40	41-43	44-45	46-47	48-50
Sleeve Length (inches)	32.5-33.5	33.5-34.5	34.5-35.5	35.5-36.5	36-37	36-37
Neck (inches)	14-14.5	15-15.5	16-16.5	17-17.5	18-18.5	18-18.5
WOMEN'S	XS	S	M	L	XL	2XL
Numeric Sizing	0	4	8	12	16	18
Bust (inches)	32.5-33.5	34.5-35.5	36.5-37.5	39-40.5	42-43.5	47
Natural Waist (inches)	25-26	27-28	29-30	31.5-33	34.5-36	36.5



Regular Fit
Our classic cut with the perfect untucked length. Runs slightly smaller than traditional shirts.



Slim Fit
One inch less fabric in the body and one half inch less in the sleeve compared to regular fit

† UNTUCKit Men's shirts run smaller than traditional brands. If you're between size, please order one size up. Women's shirts run true to size.

tentree



MEN'S	S	M	L	XL	2XL
Neck (inches)	15 - 15.5	15.5 - 16	16 - 16.5	17 - 17.5	17.5 - 18
Sleeve Length (inches)	32.875 - 33.625	33.625 - 34.375	34.375 - 35.125	35.125 - 35.875	35.875 - 36.625
Chest (inches)	36 - 38	38.5 - 40.5	41 - 43	43.5 - 45.5	46.5 - 48.5
Waist (inches)	29 - 31	31.5 - 33.5	34 - 36	36.5 - 38.5	39.5 - 41.5
Low Hip (inches)	35.5 - 37.5	38 - 40	40.5 - 42.5	43 - 45	46 - 48
Inseam (inches)	32	32	32	33	33
WOMEN'S	XS	S	M	L	XL
Chest (inches)	31 - 33	33 - 35	35.5 - 37.5	38 - 40	40.5 - 42.5
Waist (inches)	23.5 - 25.5	25.5 - 27.5	28 - 30	30.5 - 32.5	33 - 35
Low Hip (inches)	33.5 - 35.5	35.5 - 37.5	38 - 40	40.5 - 42.5	43 - 45
Sleeve Length (inches)	29.75	30.5	31.25	32	32.75
Inseam (inches)	29	29	29	30	30

The sizing charts reference body measurements.

If you require garment measurements, please contact customer service.

Chest
Under the arms and across the shoulder blades with a firm and level tape.

Hip
When standing, measure around the widest part of the hip.

Sleeve length
Relax arm, and measure from the centre of the back of the neck, over the shoulder and down to the outer wrist.

Waist
Measure around your natural waistline, while in your underwear. Keep one finger between the tape and your body for an accurate fit.

Inseam
Select a pair of your best-fitting pants of a similar material. Measure from the crotch to the bottom. The number of inches, to the nearest half-inch, is the inseam length.

